



# District Assessment Tool for Anemia (DATA): Ghana's Experience

Kate Quarshie  
Ghana Health Services

Symposium: Approaches to Prevent and Control  
Anemia: Examples of Global, National, District, and  
Community Effort  
Micronutrient Forum Global Conference 2016



# What is DATA?

A Microsoft Excel-based district-level tool that–

- Acknowledges importance of contextual factors in effective anemia control
- Identifies gaps, enablers, and barriers to addressing risk factors that lead to anemia
- Assists with prioritization of district-level anemia interventions

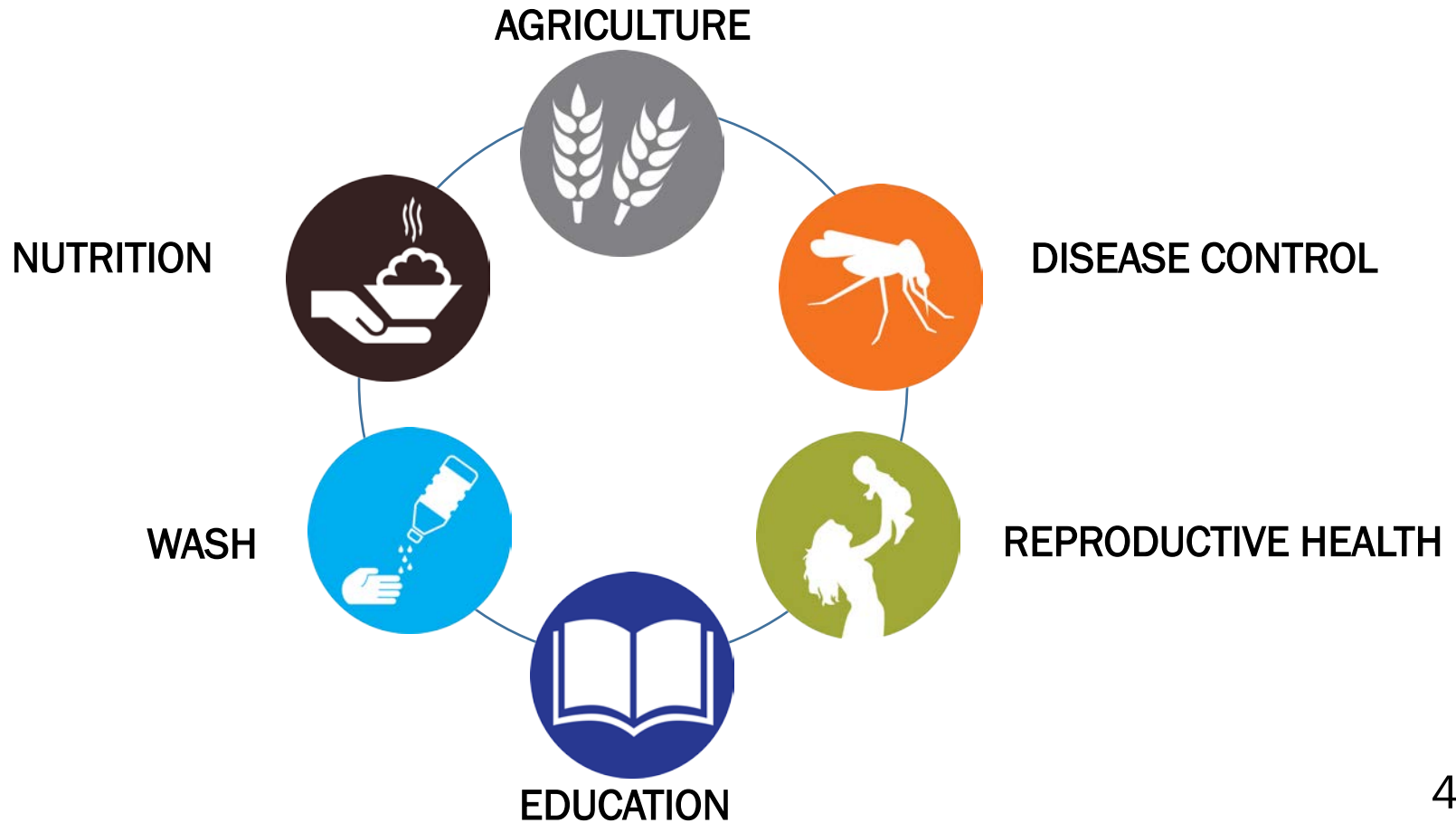
# What can DATA do for your districts?

- Increase **understanding** about anemia and its multiple causes
- Use existing data to improve **implementation** of anemia-related activities
- Highlight availability and quality of existing data, and encourage **future data** collection



# Audience

District level stakeholders across sectors



# Approach

Two-day facilitated workshop involving district-level stakeholders from:

- Health
- Water/sanitation
- Agriculture
- Education
- Local NGOs
- Other implementing partners – international NGOs



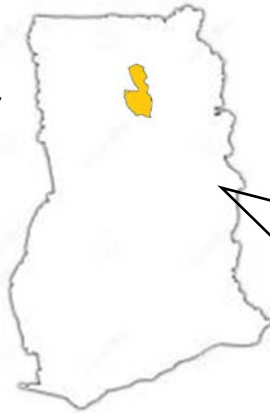
# Original Tool Used for Testing in Ghana

District Anemia Questionnaire		
Section 1. General Anemia Questions		
1	Percentage of women 15-49 years with anemia (hemoglobin < 12 g/dL) in your district.	
1a	How would you describe the prevalence of anemia among women of reproductive age (15-49 years) in your district?	
2	Percentage of children under 5 years with anemia (hemoglobin < 11 g/dL) in your district.	
2a	How would you describe the prevalence of anemia among children under 5 years in your district?	
Section 2. Nutrition		
3	Do you measure any micronutrient biomarkers (like ferritin and retinol) in your district?	
Iron Folic Acid (IFA)		
4	Is there a program in your district for IFA supplementation to pregnant women?	
5	Number of pregnant women in the district attending ANC.	
6	Number of pregnant women going to ANC receiving iron folic acid (IFA) supplementation.	
<a href="#">Tool Overview</a> / <a href="#">National Questionnaire</a> / <b><a href="#">District Questionnaire</a></b> / <a href="#">Biomarker Questionnaire</a> / <a href="#">Dashboard</a> / <a href="#">Nutrition</a> / <a href="#">Di</a>		

# Testing in Ghana: Successes

## Participant Voices

“When data is inputted, it easily generates where you are! So that interventions can be implemented to address the problem.”



“The workshop was multi-sectoral, which has given me the opportunity to learn from other sectors.”

“DATA helps point out gaps and challenges in implementation and even in data availability and quality”

# Testing in Ghana: Improvements

“There are so many questions and a lot to be talked about.”

District Anemia Questionnaire		
Section 1. General Anemia Questions		
1	Percentage of women 15-49 years with anemia (hemoglobin < 12 g/dL) in your district.	
1a	How would you describe the prevalence of anemia among women of reproductive age (15-49 years) in your district?	
2	Percentage of children 6-59 months with anemia (hemoglobin < 11 g/dL) in your district.	
2a	How would you describe the prevalence of anemia among children 6-59 months in your district?	
Section 2. Nutrition		
Iron Folic Acid (IFA)		
There is a national policy for around providing IFA supplements for pregnant women		
3	Is there a program in your district for IFA supplementation of pregnant women?	
4	What is the coverage of this program? (% of pregnant women who receive IFA)?	
4a	How would you rate the coverage of this program?	
There is NO national policy around providing IFA supplementation to women of reproductive age		
5	Is there a program in your district for IFA supplementation to women of reproductive age (including adolescent girls)?	
6	Percentage of women of reproductive age who receive IFA?	
6a	How would you rate the coverage of this program?	
Micronutrient Powders		
There is a national policy around providing micronutrient powders to children.		
7	Is there a program in your district for providing micronutrient powder to children?	
8	What is the coverage of this program? (% of children receiving micronutrient powder)?	
8a	How would you rate the coverage of this program?	
Vitamin A		
There is a national policy around providing high-dose vitamin A supplementation to children.		
9	Is there a program in your district for high-dose vitamin A supplementation to children?	
10	What is the coverage of this program? (% of children receiving vitamin A supplementation)	
10a	How would you rate the coverage of this program?	
Feeding Practices		
There is a national policy around infant and young child feeding (IYCF) practices.		
11	Is there a program in your district that promotes exclusive breastfeeding for infants 0-5 months?	
12	Percentage of infants 0-5 months who are fed exclusively with breast milk.	
12a	How would you describe the prevalence of exclusive breastfeeding among children 0-5 months of age in your district?	
13	Is there a program in your district that promotes continued breastfeeding for children 6-23 months?	
14	Percentage of children 6-23 months who are fed breast milk in your district.	
14a	How would you describe the prevalence of breastfeeding among children 6-23 months of age?	

Questions reduced from 89 to 48



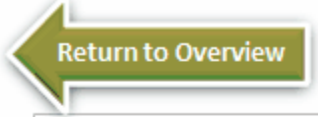


# District Anemia Questionnaire

## Section 1. General Anemia Questions

1	Percentage of women 15-49 years with anemia (hemoglobin < 12 g/dL) in your district.	
1a	How would you describe the prevalence of anemia among women of reproductive age (15-49 years) in your district?	
2	Percentage of children 5-14 years with anemia (hemoglobin < 12 g/dL) in your district.	
2a	How would you describe the prevalence of anemia among children of 5-14 years in your district?	
3	Is there a program in your district for IFA supplementation to women of reproductive age (including adolescent girls)?	Yes
4	What is the coverage of this program (IFA)?	56%
4a	How would you rate the coverage of this program?	
5	Is there a program in your district for IFA supplementation to women of reproductive age (including adolescent girls)?	
6	Percentage of WRA given IFA supplementation.	
6a	How would you rate the coverage of this program?	

“Qualitative analysis is good...”



**GUIDANCE**

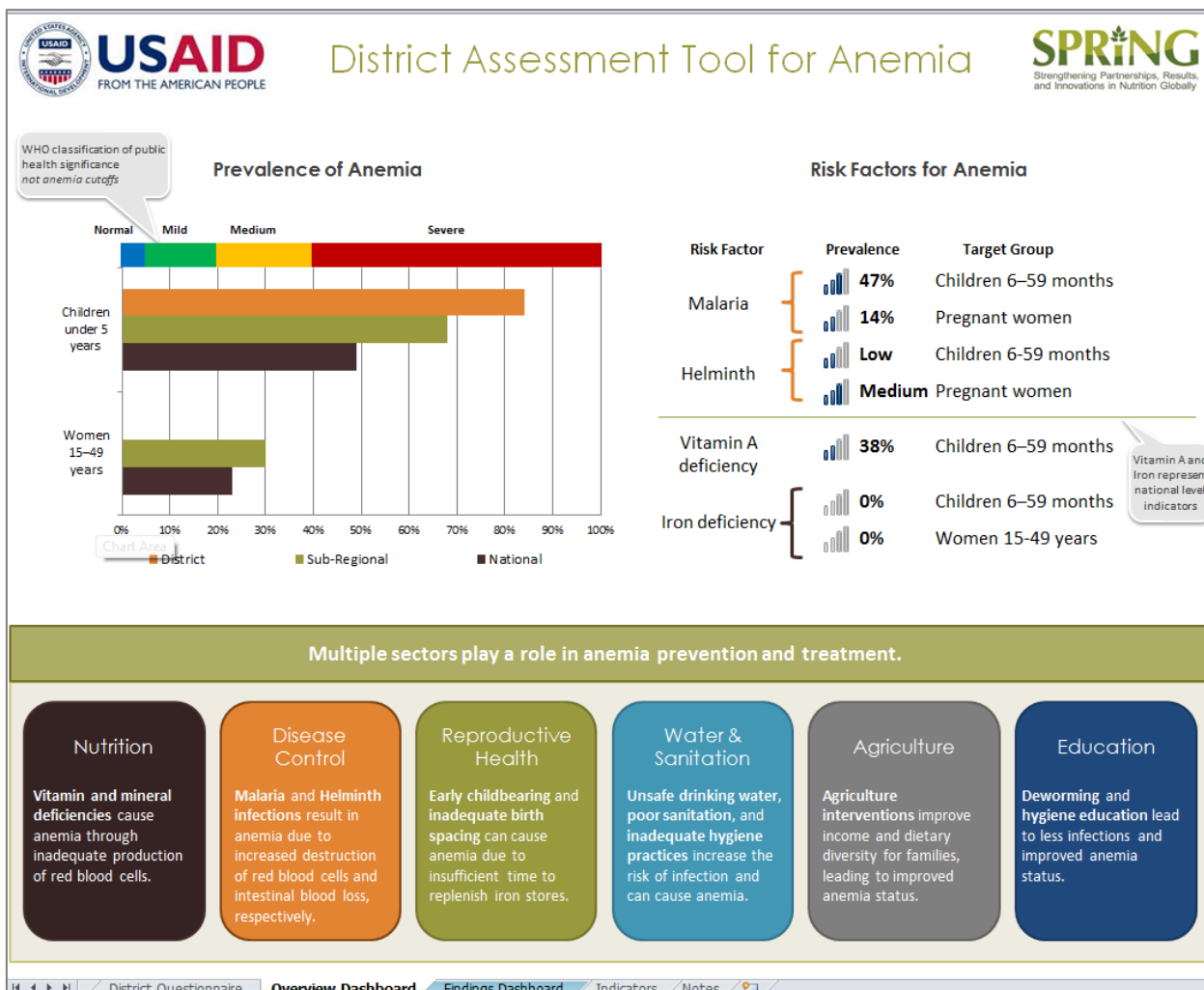
Some questions have already shown in light gray.

Some questions will not need will appear in dark gray.

For coverage responses, ONLY description.



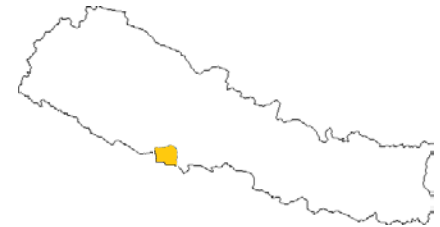
# New and Improved Dashboard - Overview





# Additional Testing and Rollout

Nepal: Revised DATA package piloted in one district



Uganda: Revised DATA package piloted in two districts and planned for one more district



Ghana: Plans to rollout DATA to 15 districts in the Northern and Upper East regions



# https://www.spring-nutrition.org/publications/tools/district-assessment-tool-anemia-data

The screenshot shows a web browser displaying the URL <https://www.spring-nutrition.org/publications/tools/district-assessment-tool-anemia-data>. The browser's address bar and various extension icons are visible at the top. The website header features the USAID logo (United States Agency for International Development) and the SPRING logo (Strongngthening Partnerships, Results, and Innovations in Nutrition Globally). Navigation menus include 'About Us', 'Events', 'Countries', 'Library', and 'Technical Areas'. A search icon is present in the top right of the navigation bar. The main content area is titled 'District Assessment Tool for Anemia (DATA)'. Below the title, there are three download links: 'Download the District Assessment Tool for Anemia (XLS, 264 KB)', 'Download the Facilitator's Guide (PDF, 2 MB)', and 'Download the User's Guide (PDF, 3 MB)'. A descriptive paragraph follows: 'The District Assessment Tool for Anemia (DATA) is a generic toolkit that helps districts assess their current anemia situation. SPRING developed DATA to assist countries in strengthening anemia programming at the district level.' Below this, a paragraph explains that anemia is an urgent public health problem affecting children and women, caused by factors like iron deficiency, malaria, and inflammation. It notes that preventing and controlling anemia requires understanding these causes and developing integrated programs. A call-to-action box at the bottom right of the content area says 'National and District Tools to Guide Anemia Programming >' and 'District Assessment Tool for Anemia (DATA)'. On the left and right sides of the page, there are sidebars with icons for 'NUTRITION', 'DISEASE CONTROL', 'WASH', 'REPRODUCTIVE HEALTH', 'AGRICULTURE', and 'EDUCATION'. The USAID and SPRING logos are also present in the bottom corners of these sidebars.

# Thank you!

## Acknowledgments:

Technical support: Edward Bonku (SPRING), Denish Moorthy (SPRING), Teemar Fisseha (SPRING), Esi Amoaful (GHS), Barbara Knittel (JSI), Emma Stewart (JSI), Sorrel Namaste (SPRING), and Danya Sarkar (SPRING).

Advisory group: Rolf Klemm (HKI), Phil Harvey (SPRING) Robin Houston (JSI), Omar Dary (USAID), Tariq Azim (JSI)

Graphic design: Jimmy Bishara (SPRING)