

Addressing dietary diversity by scaling up multi-sectoral integrated nutrition interventions in Africa

Altrena G. Mukuria, DrPH; Tim Williams; Lidan Du, PhD; Edward Bonku, MD; Bob de Wolf, MPH; and Robert Mwadime, PhD

The authors declare no conflict of interest.



Addressing dietary diversity by scaling up multi-sectoral integrated nutrition interventions in Africa

Altrena G. Mukuria, DrPH; Tim Williams; Lidan Du, PhD;
Edward Bonku, MD; Bob de Wolf, MPH; and Robert
Mwadime, PhD

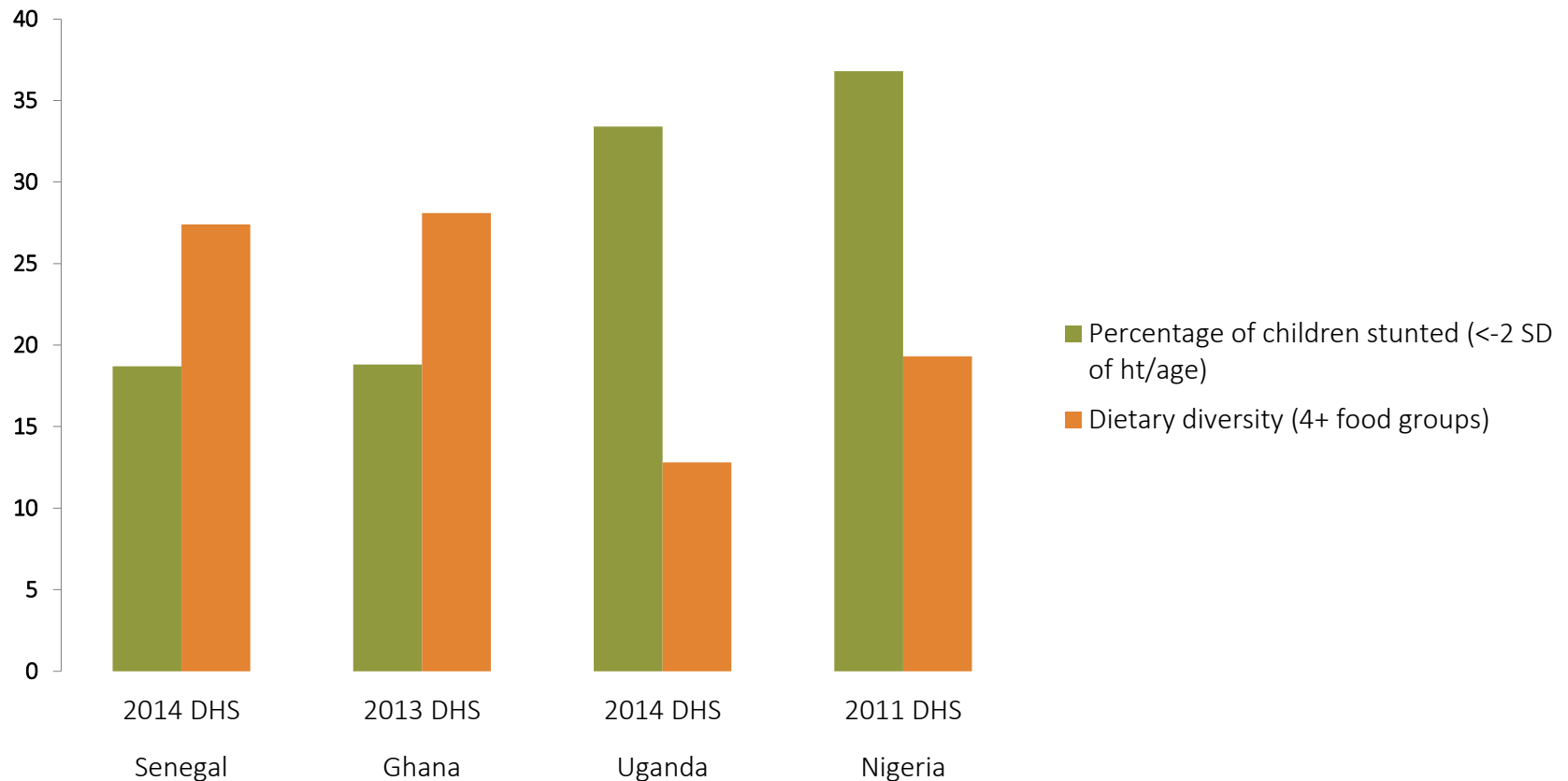


October 2017

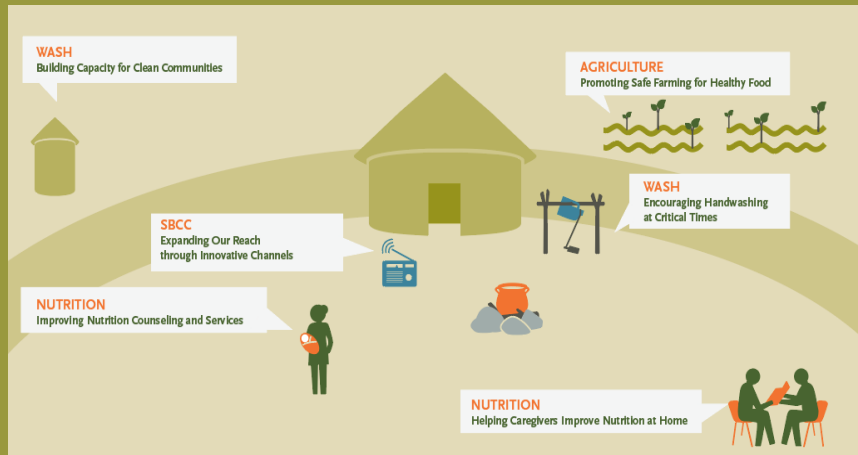
Complementary feeding can prevent **6% of all deaths** in children 6-23 months.



Dietary diversity levels and percentage of children (6-23 months) stunted in SPRING countries



Ghana



Multi-sectoral 1,000-day households

Nigeria



Community and facility IYCF

Senegal



Nutrition-sensitive agriculture

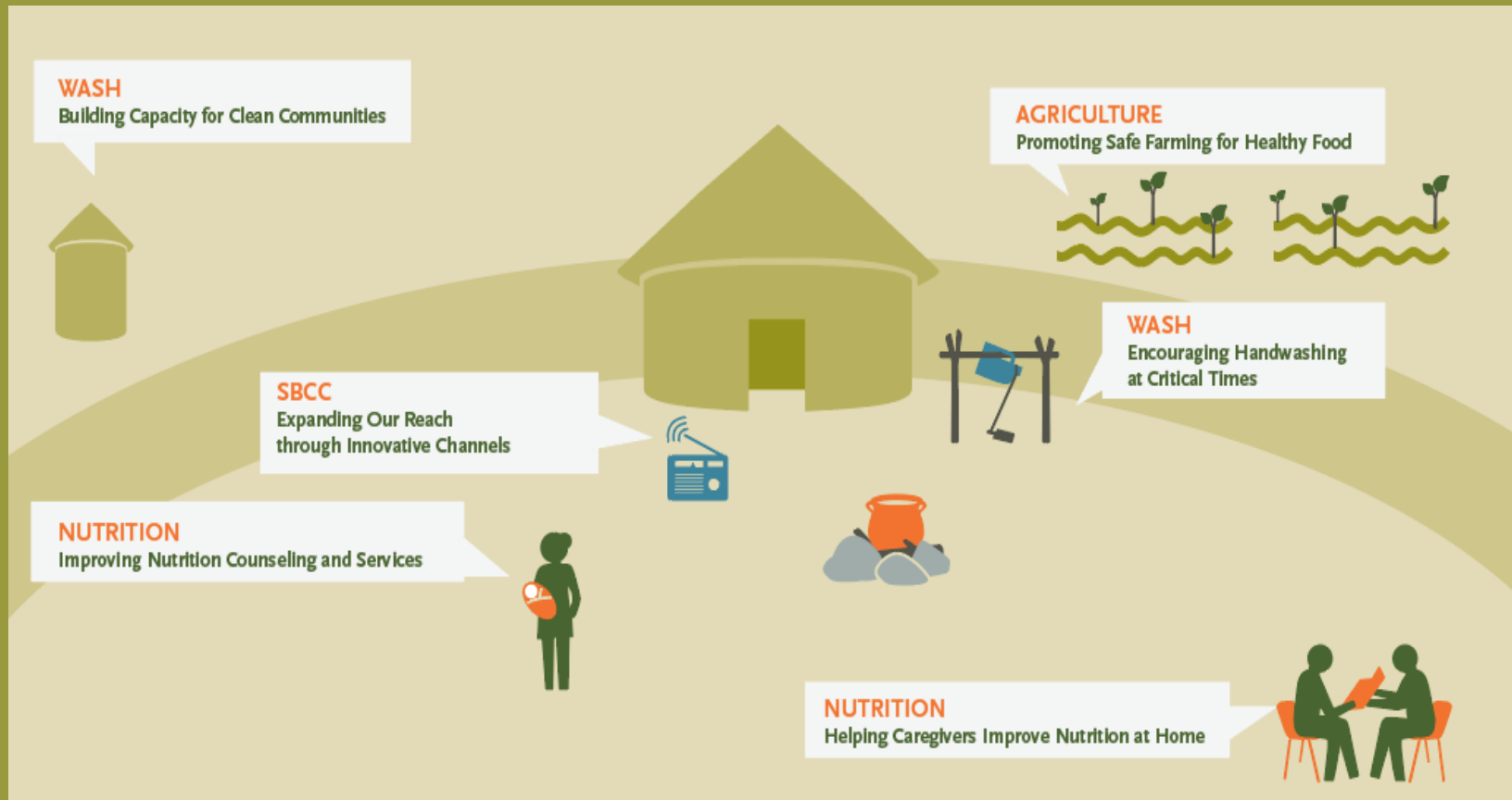
Uganda



Food fortification



Ghana



Multi-sectoral 1,000-day households



Nigeria



Community and facility IYCF



Uganda



Food fortification



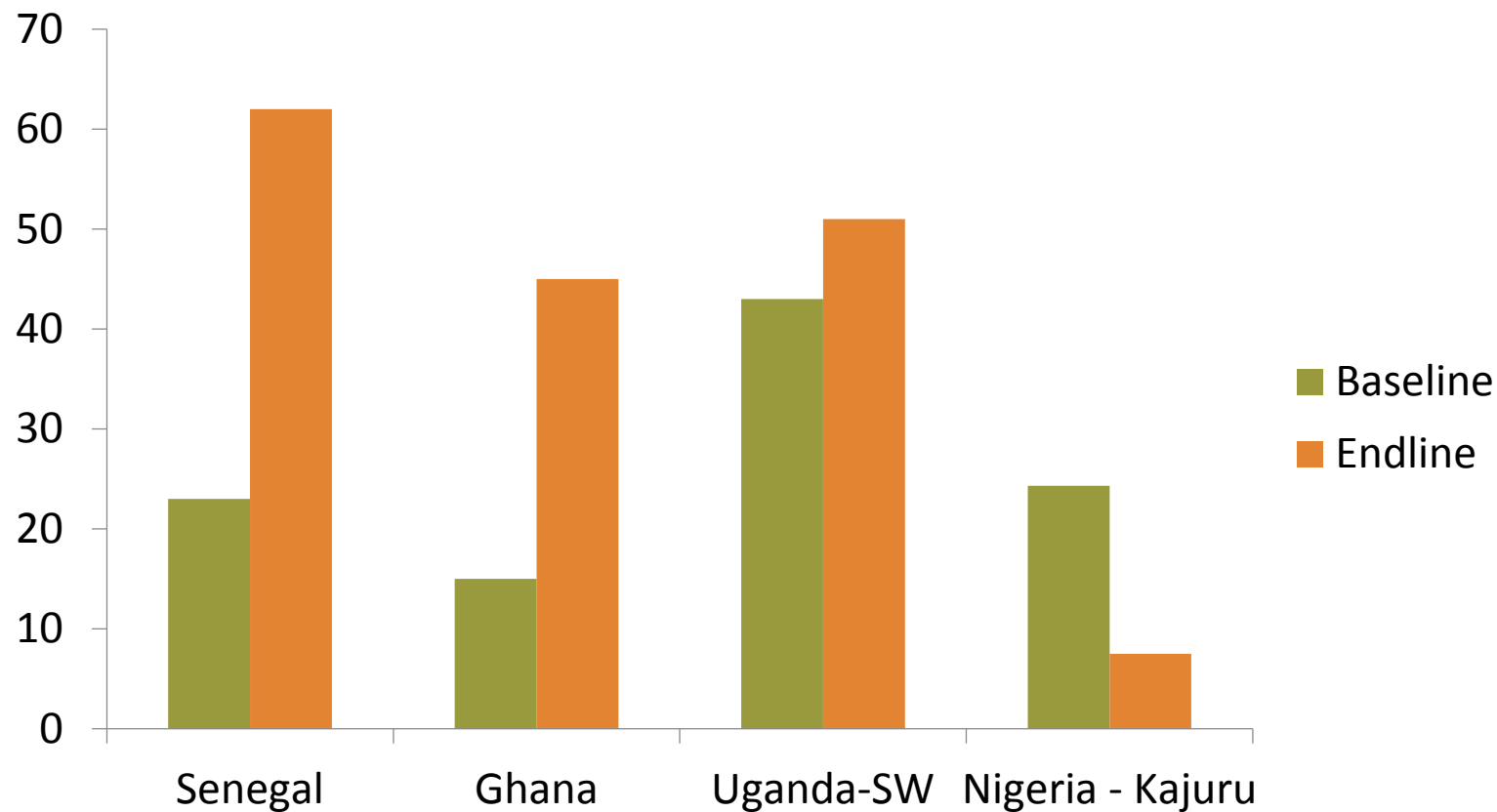
Senegal



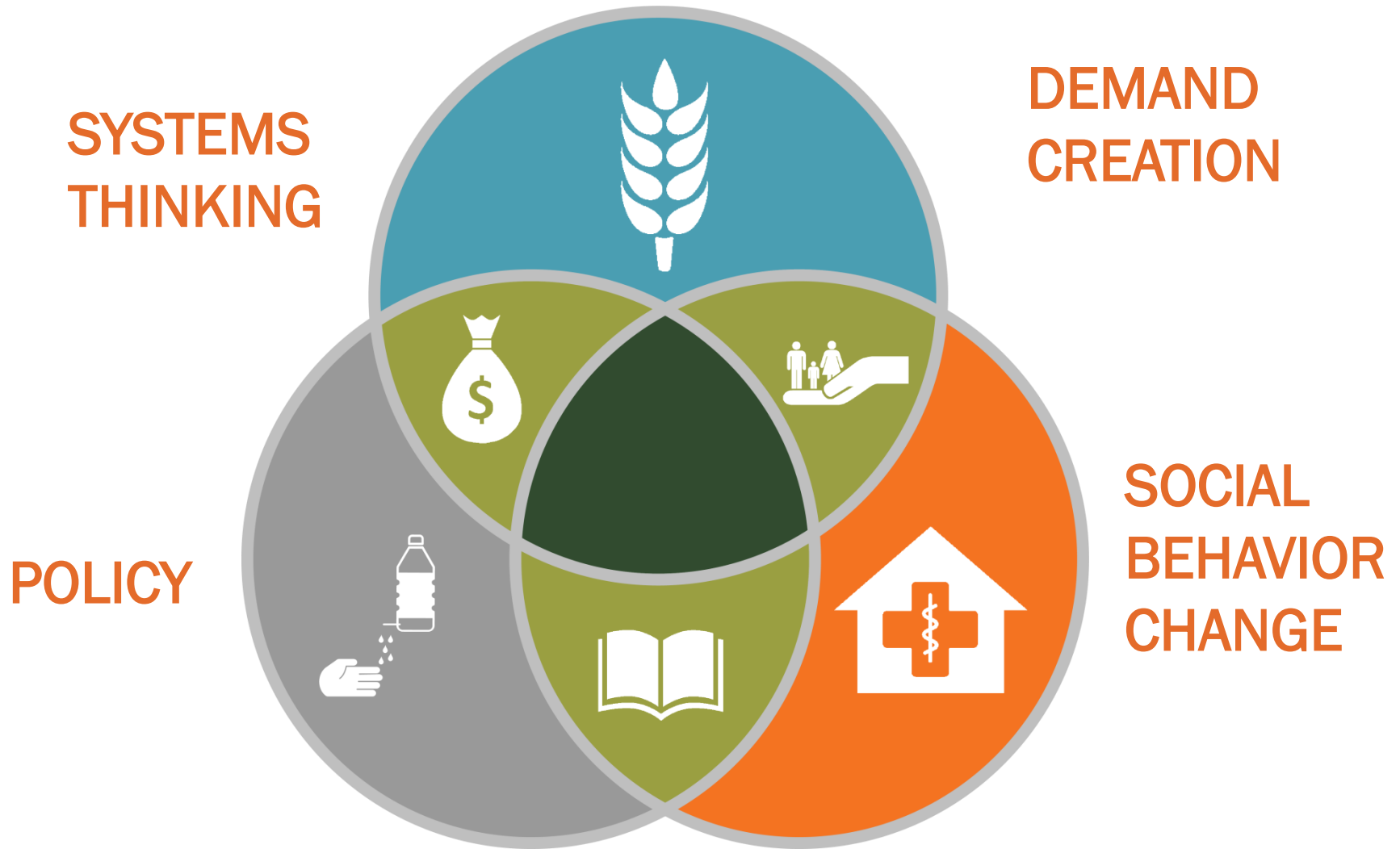
Nutrition-sensitive agriculture



Prevalence of dietary diversity of children 6-23 months within SPRING target areas



SPRING's multi-sectoral approach



Thank you!

For more info,
please contact:

Altrena Mukuria,

Director, Country Initiatives

Altrena_Mukuria@jsi.com

or visit

www.spring-nutrition.org



www.spring-nutrition.org



This presentation is made possible by the generous support of the American people through the United States Agency for International Development (USAID) and Feed the Future, the U.S. Government's global hunger and food security initiative, under the terms of the Cooperative Agreement AID-OAA-A-11-00031 (SPRING), managed by JSI Research & Training Institute, Inc. (JSI) with partners Helen Keller International, the Manoff Group, Save the Children, and the International Food Policy Research Institute. The contents are the responsibility of JSI, and do not necessarily reflect the views of USAID or the United States Government.

