

# How to Strengthen Program Implementation at Scale: EVIDENCE FROM NIGERIA

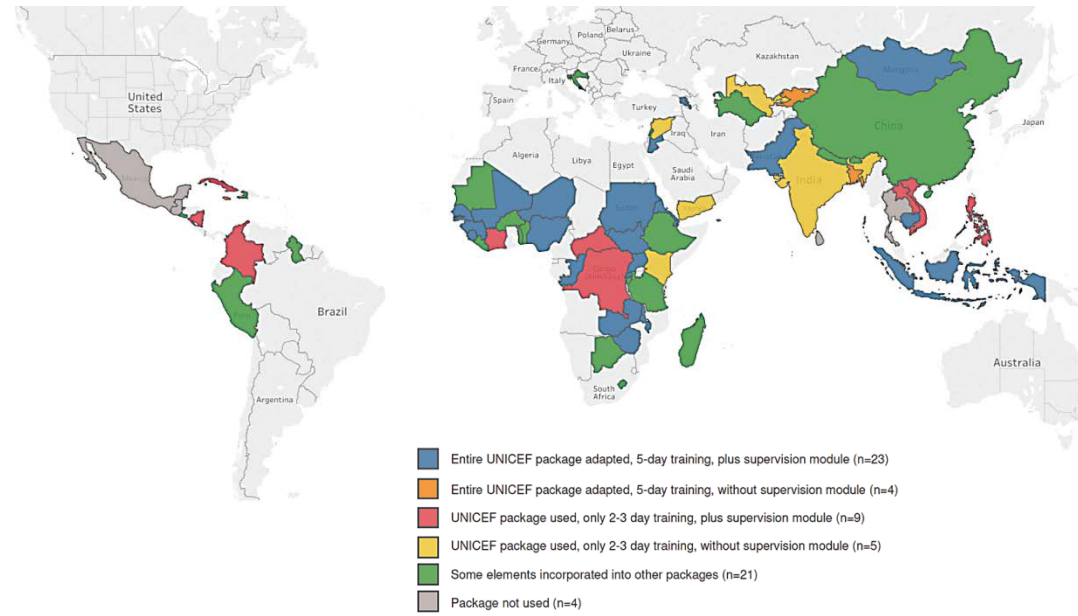
September 2017



The UNICEF *Community Infant and Young Child Feeding (C-IYCF) Counselling Package* was first released in 2010..



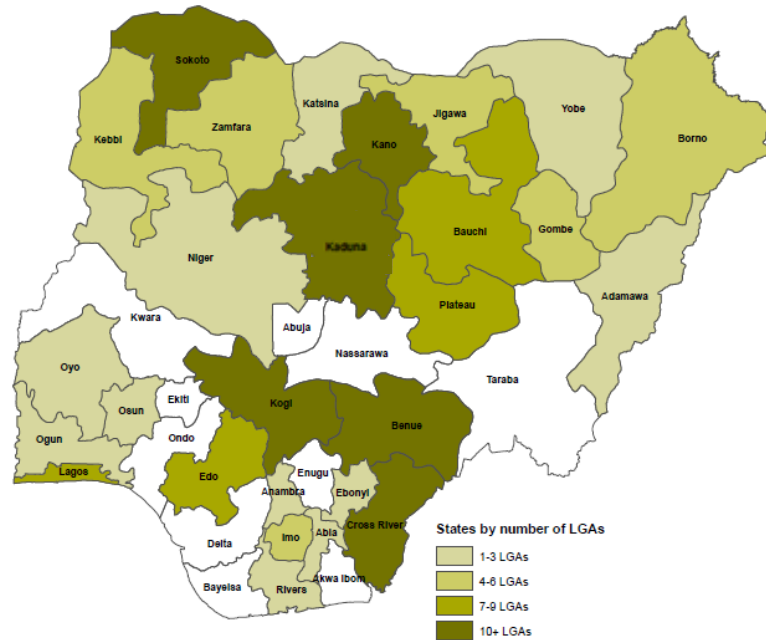
Since then, it has been used in more than 50 countries. (UNICEF 2017)



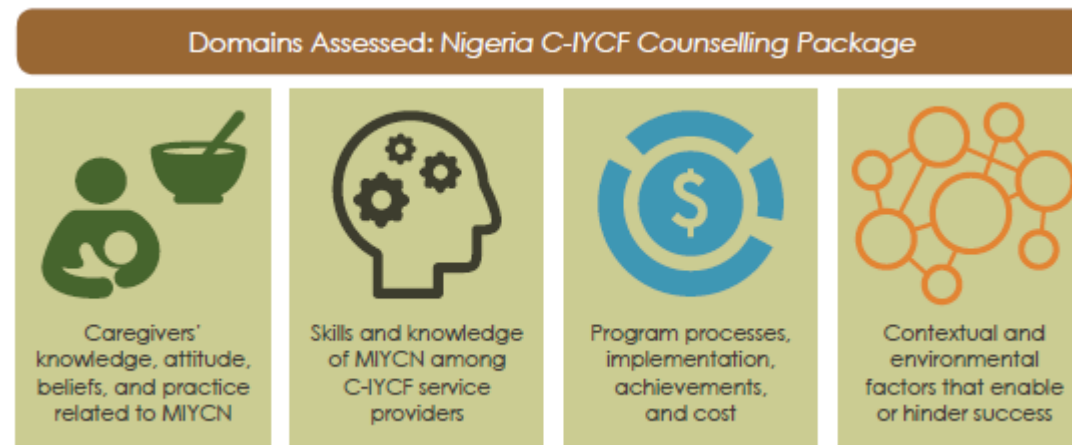
Nigeria adapted and adopted the UNICEF *Community Infant and Young Child Feeding (C-IYCF) Counselling Package*, starting in 2011, and it has since been rolled out in many states across the country.



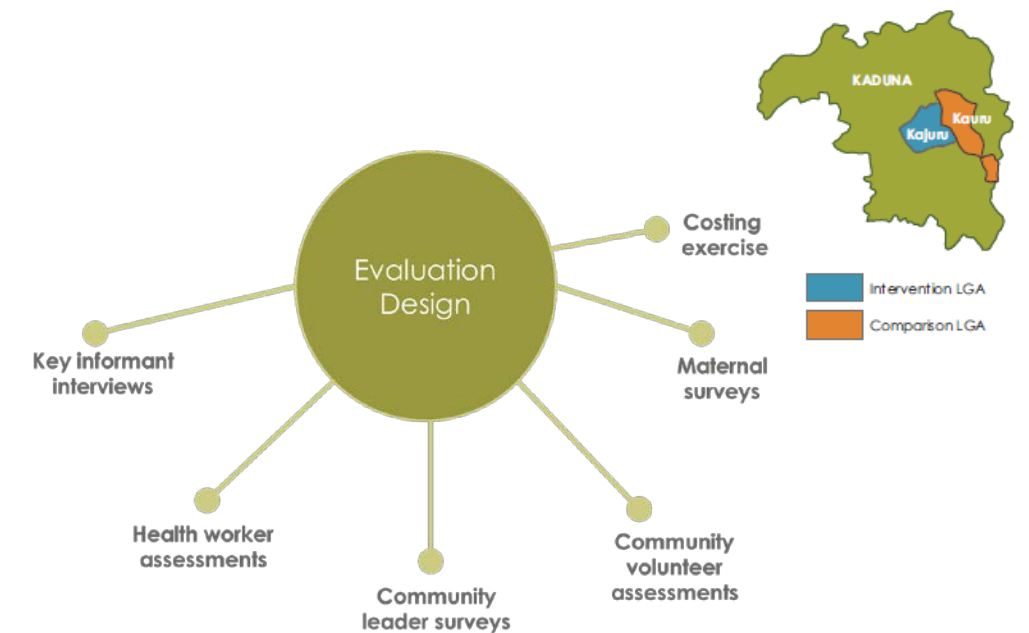
Many groups have been involved in rolling it out across the country.



The Nigerian Federal Ministry of Health (FMOH) partnered with SPRING and UNICEF to assess four domains related to implementing the package.

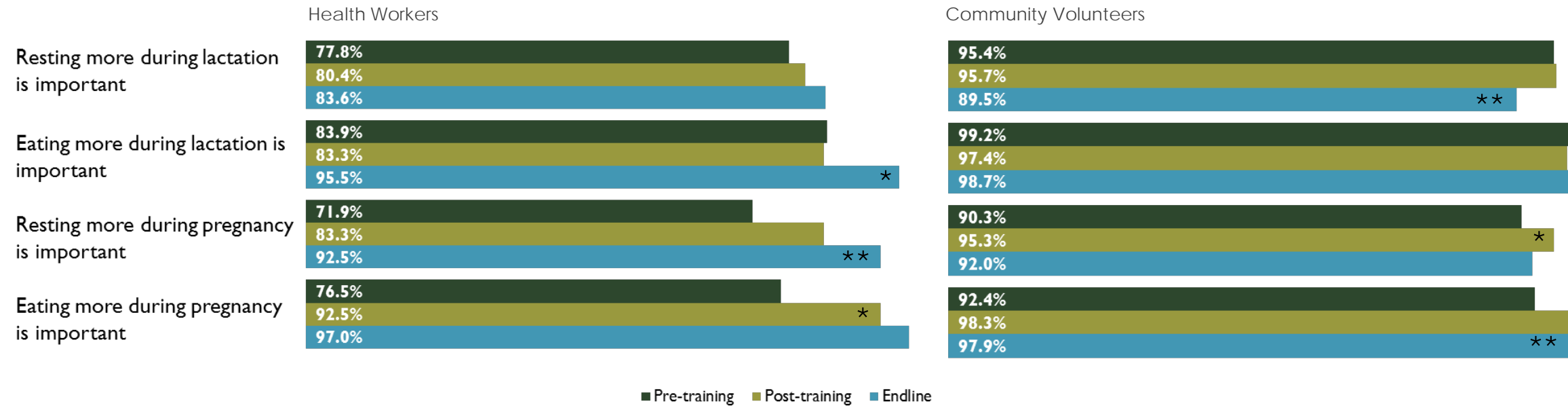


Using mixed methods, this team has evaluated at-scale implementation in Kajúru Local Government Area (LGA).

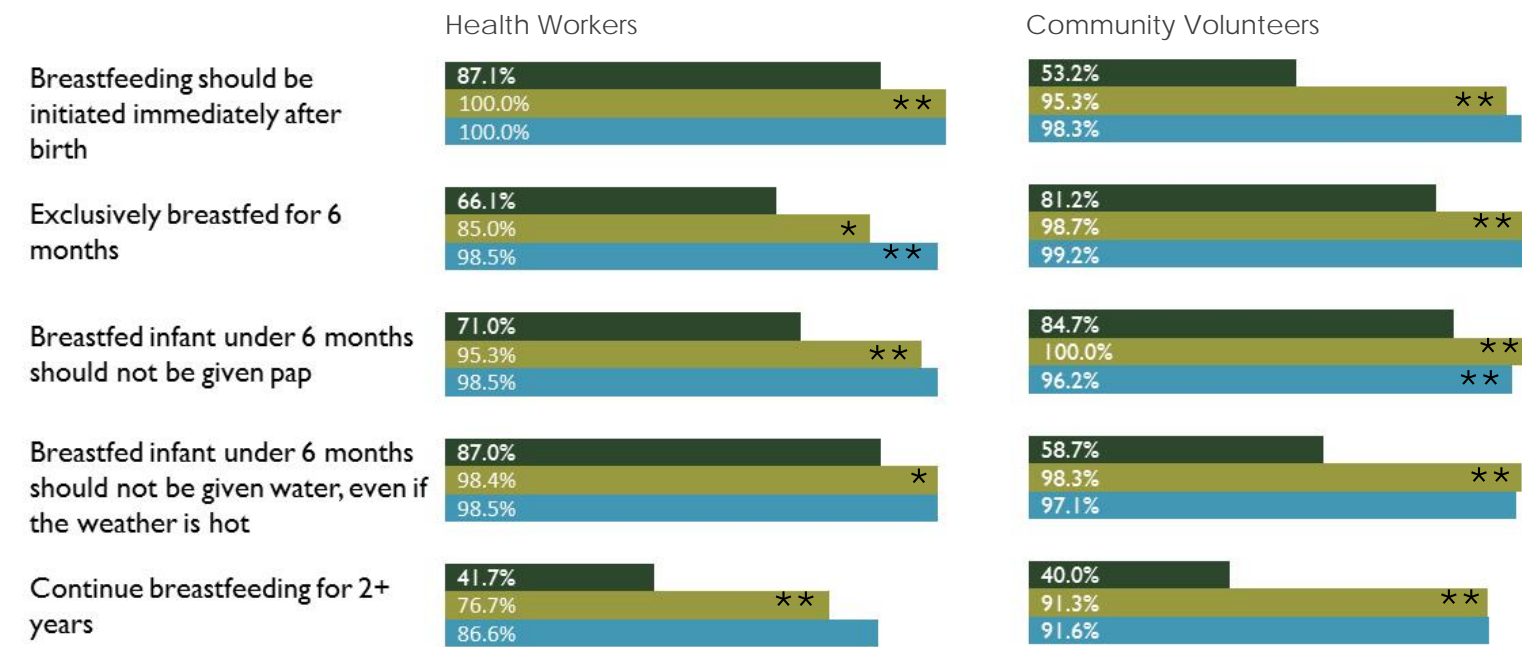


Implementation of the C-IYCF Counselling Package in Kaduru involved training **65 health workers** (in a 6 day training) and **238 community volunteers** (in a 3-day training).

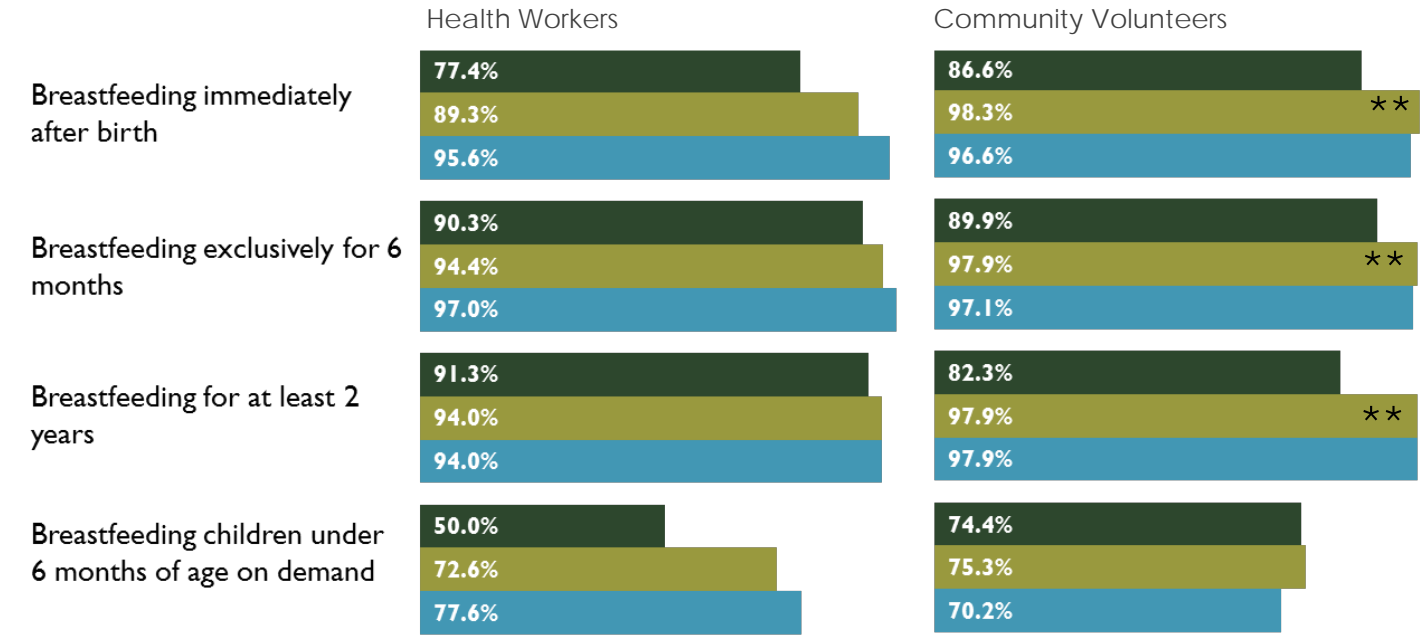
Health workers and community volunteers **both agreed with the importance of the following maternal nutrition practices:**



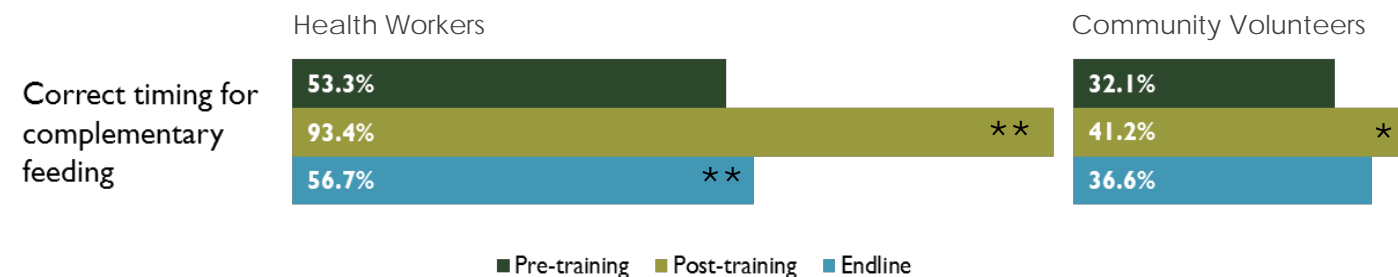
**Knowledge of optimal breastfeeding practices was high** among health workers and community volunteers.



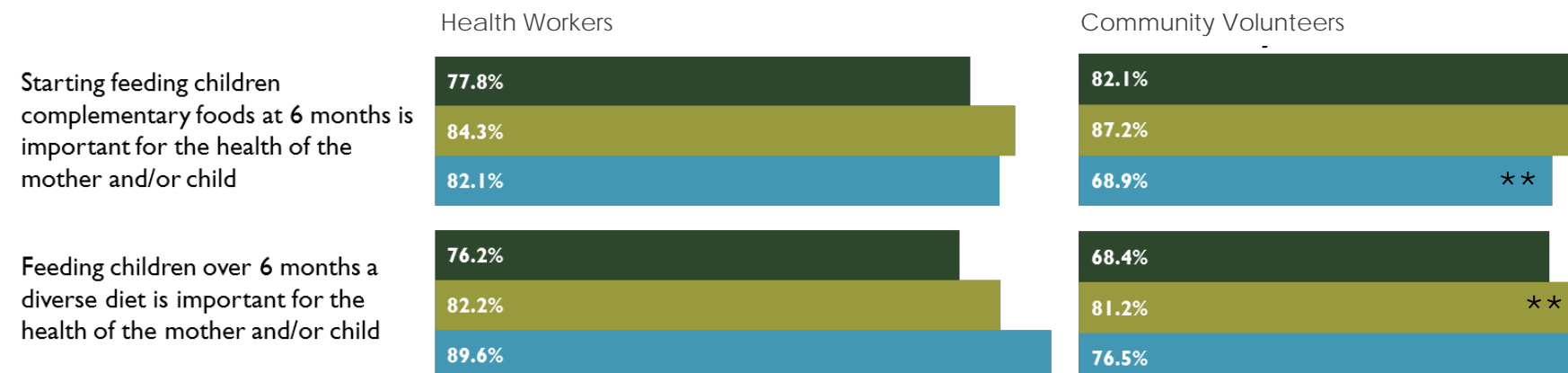
By endline, health workers and community volunteers **agreed with the importance of these practices.**



**Knowledge of optimal complementary feeding improved** after training, but was not always retained at the immediate post-training level.



By endline, health workers and community volunteers **agreed with the importance of these practices.**



\* Difference between pre- and post-training or between post-training and endline is statistically significant (p<0.05).  
 \*\* Difference between pre- and post-training or between post-training and endline is statistically significant (p<0.01).