



**FEED<sup>THE</sup>FUTURE**

The U.S. Government's Global Hunger and Food Security Initiative

# **M&E OF INTEGRATED AGRICULTURE AND NUTRITION PROGRAMS UNDER FEED THE FUTURE**

Anne Swindale  
Washington, DC  
AgN-GLEE  
6/18/13



- FTF Results Framework
- FTF Indicators
- Relationship between FTF RF and Agriculture-Nutrition Pathways
- Case study: Malawi Integrating nutrition in Value Chains (Malawi-INVC) Performance Management Plan

# Feed the Future Goal: Sustainably Reduce Global Poverty and Hunger

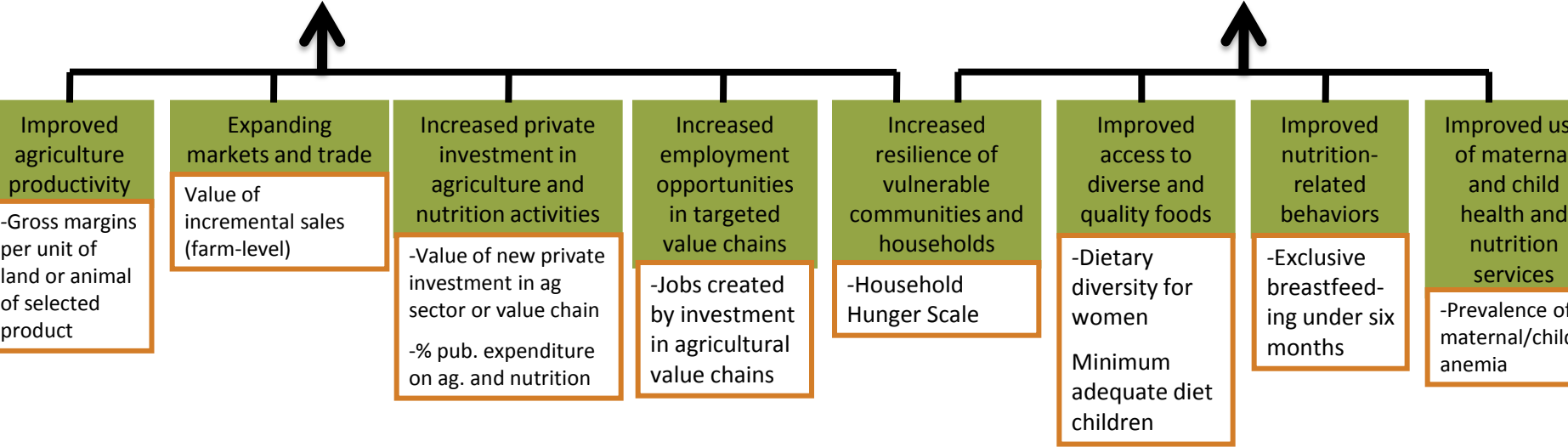
- Prevalence of poverty      - Prevalence of underweight children

## High Level Objective: Inclusive agriculture sector growth

-Agriculture Sector GDP  
-Per capita expenditures in rural households  
- Women's Empowerment in Agriculture Index

## High Level Objective: Improved nutritional status esp. of women & children

-Prevalence of stunted children  
-Prevalence of wasted children  
-Prevalence of underweight women



Programs and policies to support agriculture sector growth

AVAILABILITY

Programs and policies to increase access to markets and facilitate trade

ACCESS

Programs and policies to reduce inequities

STABILITY

Programs and policies to support positive gains in nutrition

UTILIZATION

## Definition of Food Security





## Total of 57 FTF indicators

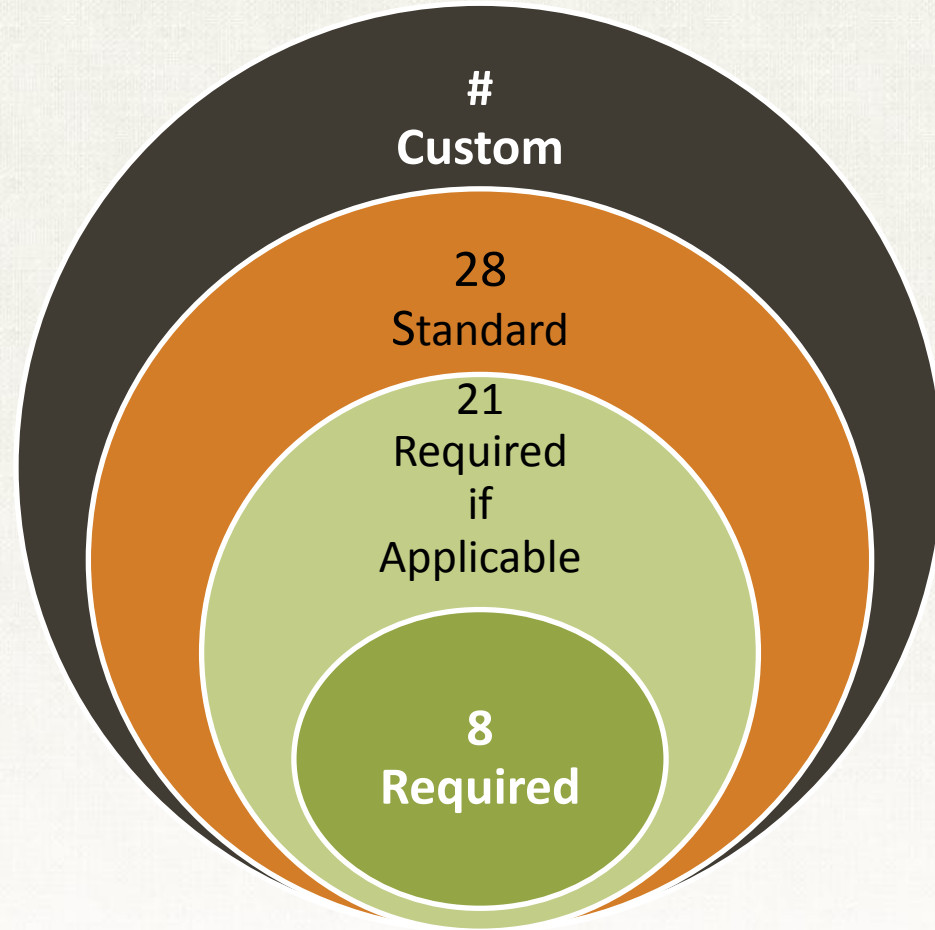
- 8 required
- 21 required if applicable  
(includes Whole of Gov't)
- 28 standard
- #? Custom

\* \* \* \* \*

## 13 population level in FTF Zone of Influence (population-based survey)

- 7 national/regional level  
(existing source)

## 37 project level (implementers)





# ZOI Population-based Indicators

**Prevalence of Poverty: % of people living under \$1.25/day**

**Per capita expenditures**

**Women's Empowerment In Agriculture Index**

**4 Anthropometric Indicators –Child stunting, underweight, wasting, Women's BMI**

**2 Dietary Diversity Indicators –Women's DD Score, Minimum Adequate Diet 6-23mo**

**Prevalence of exclusive breastfeeding**

**Prevalence of anemia among women and children**

**Household Hunger Scale**

- Collected Baseline (2012), Mid-term (2015) and final (2017)
- NOT 100% attributable





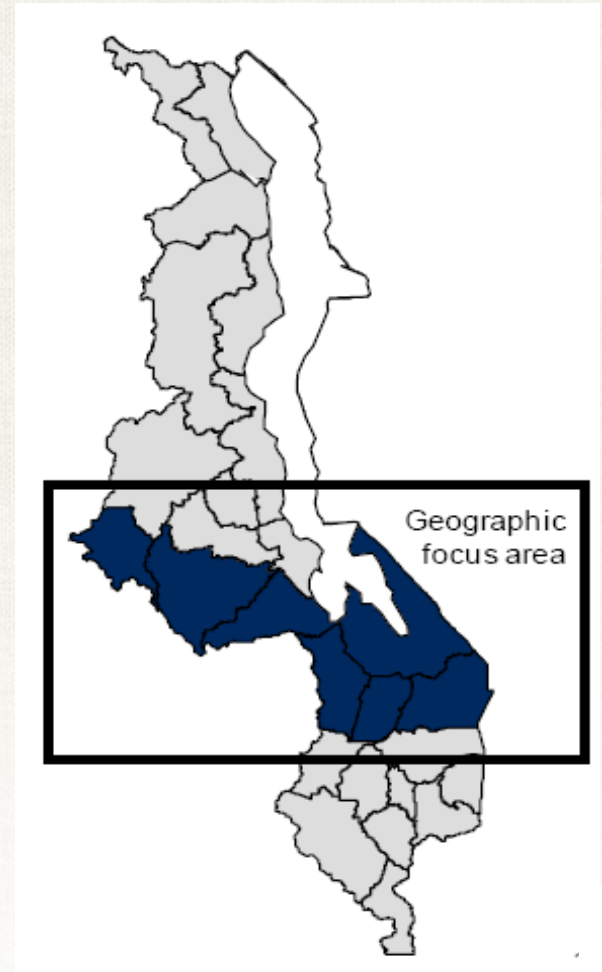


## Malawi Integrating Nutrition in Value Chains Project (INVC)

- 3-Year FTF project implemented by Development Alternatives Inc. (DAI), Save the Children & Michigan State University
- Goal: Sustainably reduce rural poverty and improve Nutrition
- By strengthening legume (*soy bean & ground nuts*) and dairy value chains and improving community capacity to prevent undernutrition



- Value chain activities implemented in 7 districts in soy bean, groundnut & dairy farming areas
- Integrated nutrition component implemented in 2 of the 7 districts







- Strong USAID Forward focus
  - Sub-grant component totaling US\$11 million for a period of 3 years
- Implementation carried out through local partners:
  - Implementing partners
  - Technical service providers
  - Business service providers

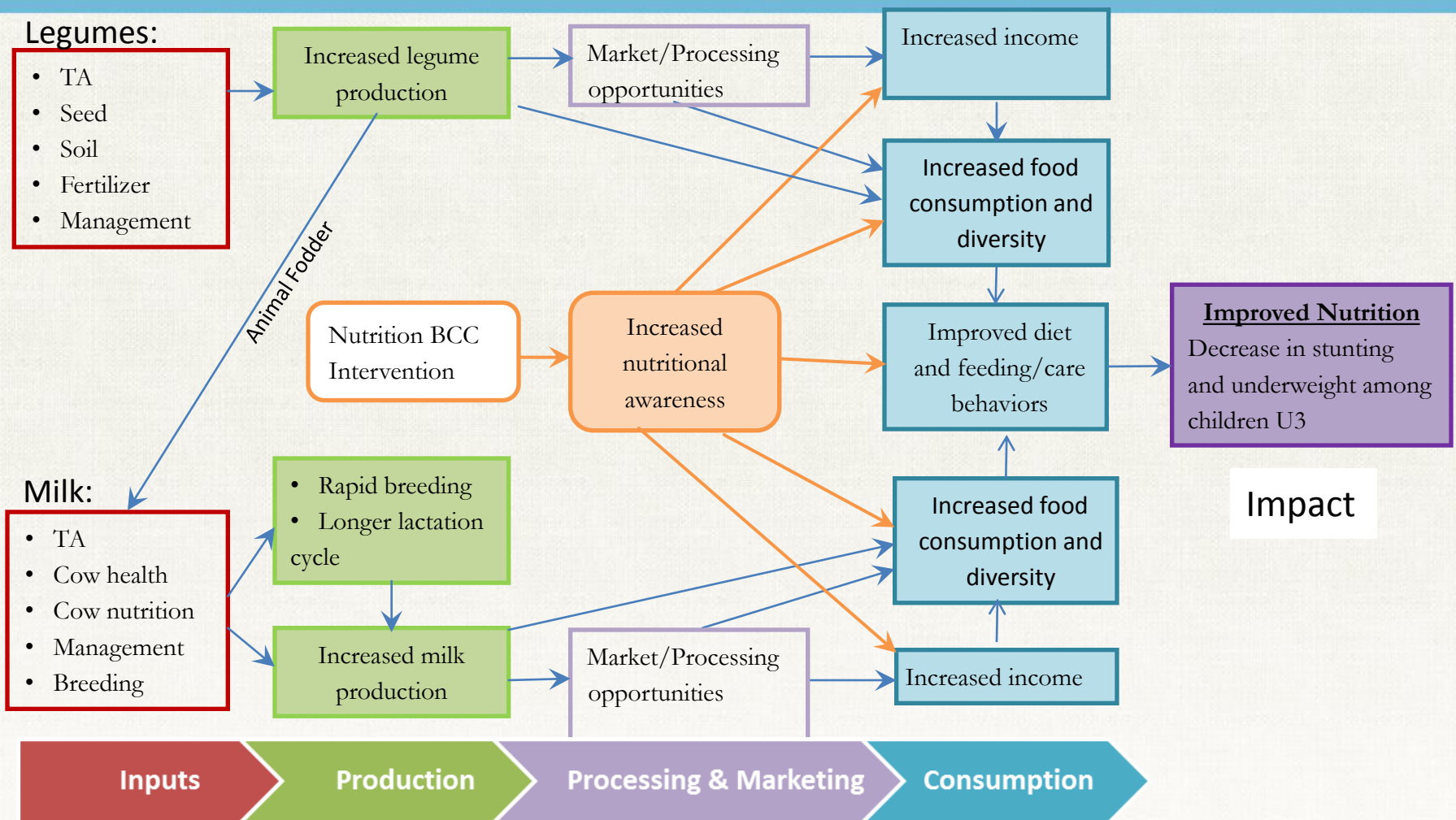


- The “poor with assets”
  - Smallholders farmers who cultivate between 0.5 to 1.2 Ha (1.25 to 3 acres) of land
- Pregnant women, lactating mothers & <5 children
- Expected to reach 275,000 households in 7 districts
- Expected to reach 100,000 <5 children in 2 districts





# INVC Causal Pathway

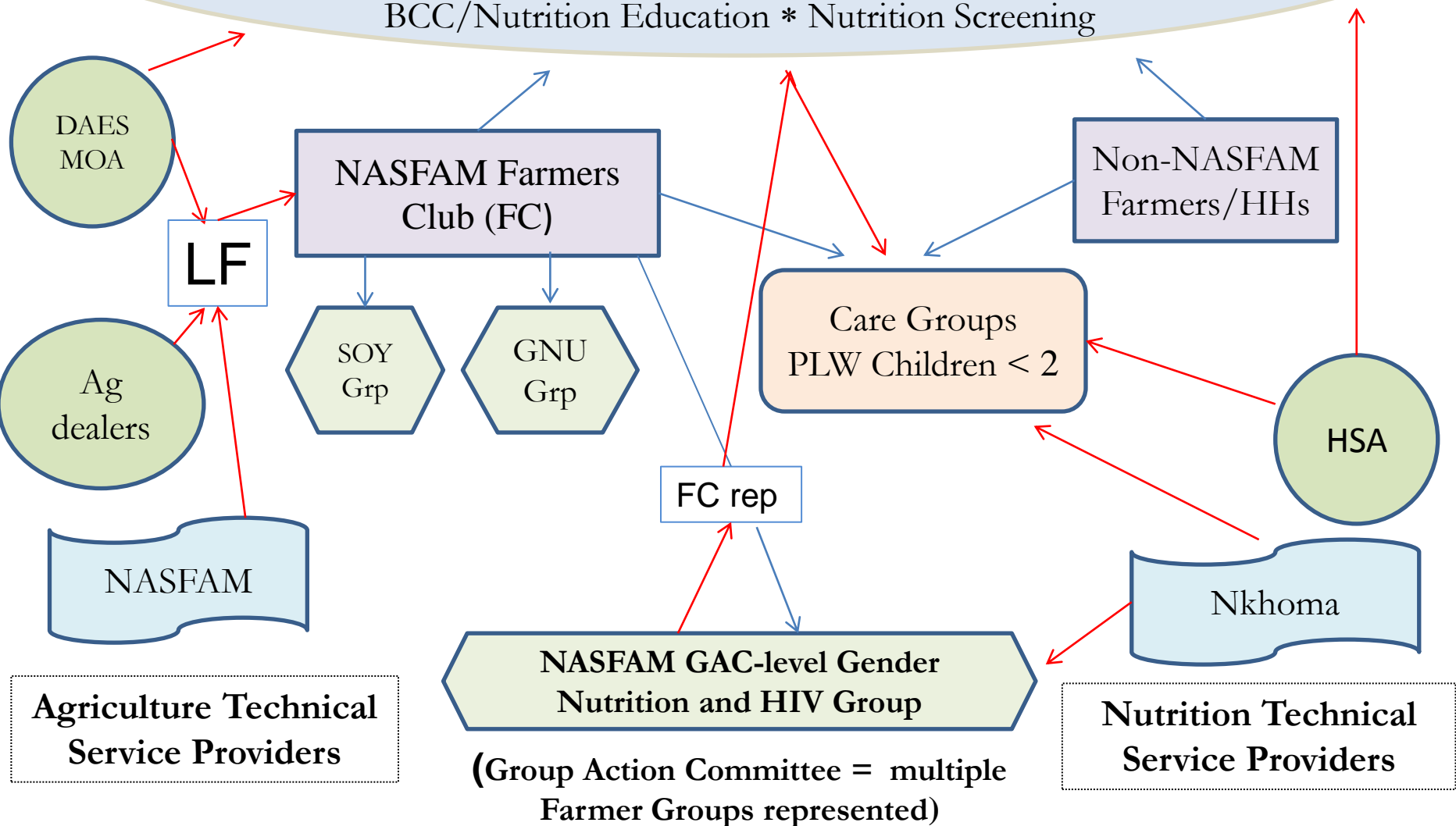




# INVC Community-Level Approach - NASFAM Example

Village Development Committee, V. Health C.

Community/HH gardens \* Storage Practices \*  
 Soy/G-nut Processing \* Cooking Demonstrations/Recipes  
 BCC/Nutrition Education \* Nutrition Screening





**SO1 Inclusive Agricultural Sector Growth**  
**SO2 Improved Nutritional Status Especially of Women and Children**

**IR1**  
Agricultural  
Productivity

**IR2**  
Expanding  
Markets  
and Trade

**IR6**  
Access to  
Diverse and  
Quality Foods

**IR7**  
Nutrition-  
related  
Behaviors

**IR8**  
Health and  
Nutrition  
Services



A combination of:

1. FTF required if applicable and standard implementing partner-level indicators
2. Custom indicators derived from the 13 FTF population-based indicators - measure only
  - INVC direct beneficiary population rather than ZOI population level
  - beneficiary children in the age range where nutrition impacts most likely given 2 years of on-the-ground implementation
3. Custom indicators to measure project-specific outputs and outcomes





SO1  
Inclusive  
Agricultural  
Sector Growth

SO2  
Improved  
Nutritional Status  
Especially of  
Women and  
Children

- **Per capita expenditures of INVC direct beneficiaries in all INVC districts**
- **% stunted children under 3 years of age in integrated agriculture-nutrition districts**



IR1  
Agricultural  
Productivity

- **Gross margin/ha of soy and groundnut**
- **Yield/ha of soy and groundnut**
- **Volume, Value of soy and g-nut production**
- **# hectares under improved technologies**
- **# farmers applying improved technologies**
- **# organizations applying improved technologies**
- **# farmers receiving short-term training**
- **# organizations receiving capacity building support**
- **# members of producer organizations assisted**
- **# organizations assisted**





IR2  
Expanding  
Markets  
and Trade

- Value of incremental sales of soy and groundnut
- Value of agricultural and rural loans disbursed
- # smallholders accessing market information systems
- # MSME, including farmers, receiving assistance to access loans
- # MSME, including farmers, receiving business development services





IR6  
Access to  
Diverse and  
Quality Foods

- **% children 6-23 months receiving minimum adequate diet in integrated agriculture-nutrition districts**
- **Women's dietary diversity score in integrated agriculture-nutrition districts**



IR7  
Nutrition-  
related  
Behaviors

- **% children 0-5 months exclusively breastfed in integrated agriculture-nutrition districts**
- **% children 6-23 months consuming soy and/or groundnut and/or dairy food group)**
- **% women 15-49 years consuming soy and/or groundnut (and/or dairy food group)**



IR8  
Health and  
Nutrition  
Services

- **# malnourished children under five referred to health post for evaluation**
- **# children under five screened for malnutrition**
- **# children reached by nutrition program**
- **# people trained in child health and nutrition**





- **Annual Beneficiary Survey**
  - Collects impact indicators and majority of household, farm-level and nutrition outcome indicators
  - Sample frame
    - NASFAM member list
    - Village Development Community household list
- **Project records of INVC implementing partners**
  - Agriculture: Field officer to NASFAM HQ to INVC
  - Nutrition: Care Group Leader to Health Promoters to BCC/Nutrition Supervisor to NASFAM HQ to INVC



- New, innovative, challenging approach
  - On-going learning critical
- **Impact evaluation** of nutrition impact of agriculture-nutrition integrated approach vs agriculture-only approach
  - BFS FEEDBACK/University of North Carolina
- **Special studies**
  - Predominantly qualitative
  - As needed during implementation